

SHEN ZHEN SHI HONGZHOU OPTOELECTRONICS TECH CO.,LTD

Part Number: B525RC

Page: 1/3

1.SPECIFICATIONS

(1) Absolute Maximum Rating (Ta=25℃)

Item	Symbol	Absolute Maximum Rating	Unit
Forward Current	IF	20	mA
Peak Forward Current	IFP	50	mA
Reverse Voltage	VR	4	V
Power Dissipation	PD	40	mW
Electrostatic Discharge (HBM)	/	/	V
Operating Temperature	TOP	-40℃~80℃	℃
Storage Temperature	TSTG	-40℃~100℃	℃
Lead Soldering Temperature	TSOL	260℃ FOR3SECONDS	

IFP Conditions: Pulse Width≤10msec.and duty ≤1/10

(2) Initial Electrical/Optical Characteristics (Ta=25℃)

Item	Symbol	Condition	Min	Typ	Max	Unit
Forward Voltage	VF	IF=20(mA)	1.9	/	2.1	V
Reverse Current	IR	VR=5(V)	/	/	20	μA
Viewing Angle	2θ1/2	IF=20(mA)	/	30	/	deg
Luminous Intensity	IV	IF=20(mA)	1000	/	1300	mcd
Dominant Wavelength	λ	IF=20(mA)	620	/	625	
Recommend Forward Current	IF(Rec)	/	/	20	/	mA

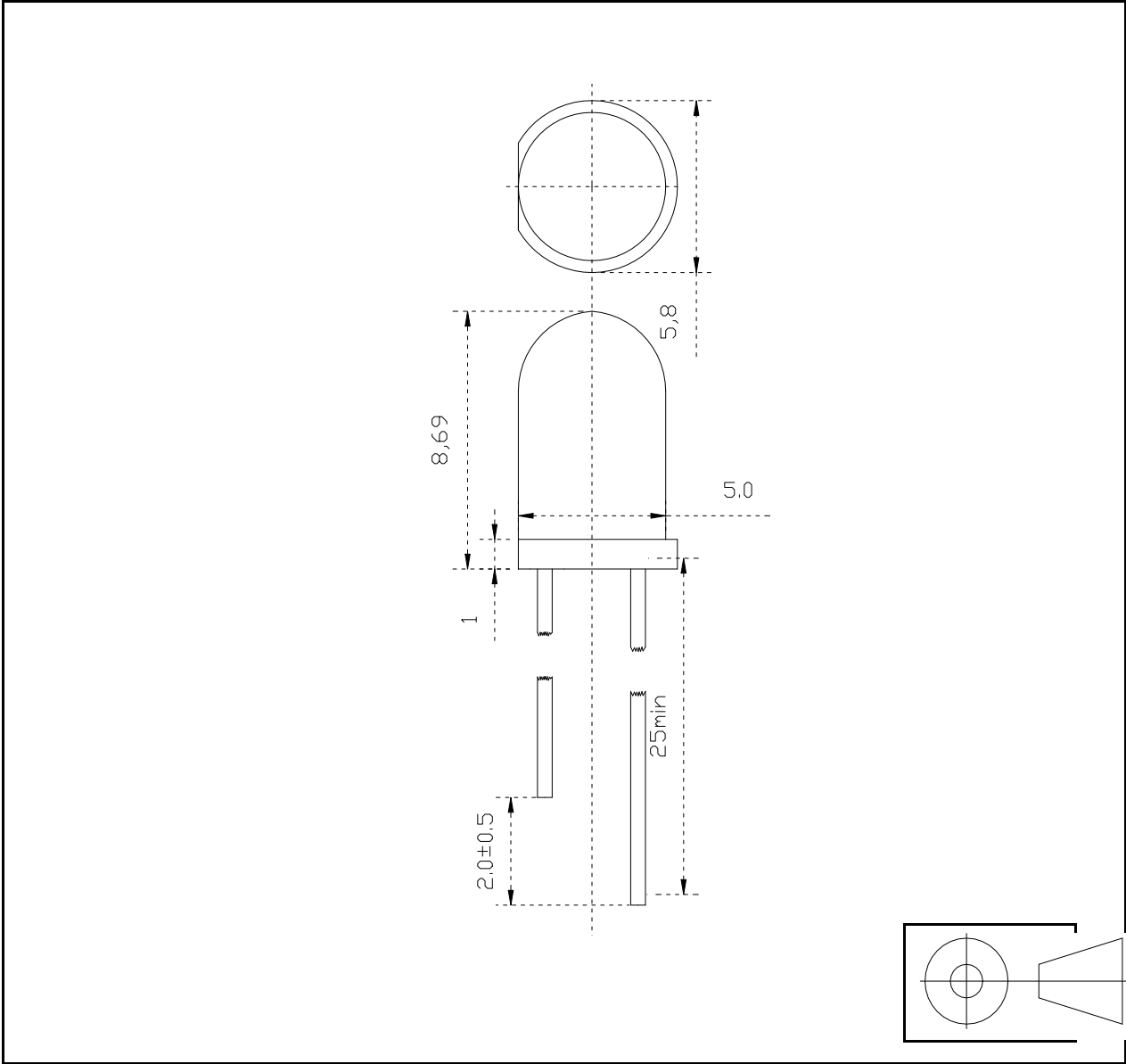
2.TYPICAL INITIAL OPTICAL/ELECTRICAL CHARACTERISTICS

3.OUTLINE DIMENSIONS AND MATERIALS

Material as follows: Resin :Epoxy

Lead frame:Ag plating Copper alloy

■ Package Dimension:



Part Number	Chip		Lens Color
F32G3	Material	Emitting Color	
	AlGaInp	RED	RED

- NOTES:
- 1.All dimension are millimeters
 - 2.Tolerance is ± 0.25 mm unless otherwise noted.

SHEN ZHEN SHI HONGZHOU OPTOELECTRONICS TECH CO.,LTD

■ Typical Electro-Optical Characteristic Curves:

Fig1.Forward Current vs.Forward Voltage

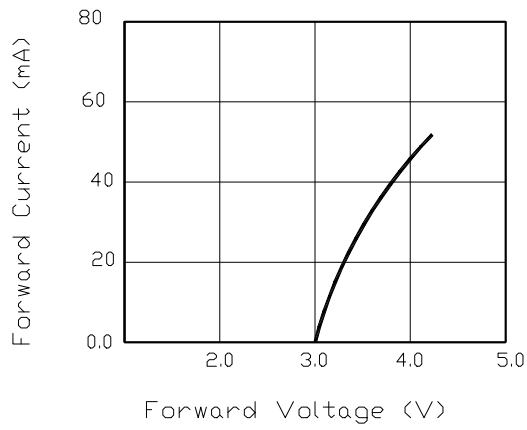


Fig2.Relative Intensity vs. Forward Current

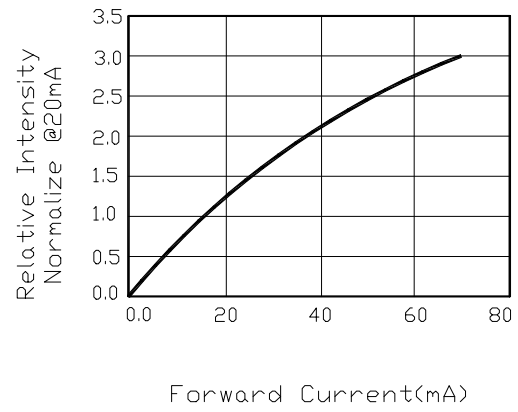


Fig3.Forward Voltage vs. Temperature

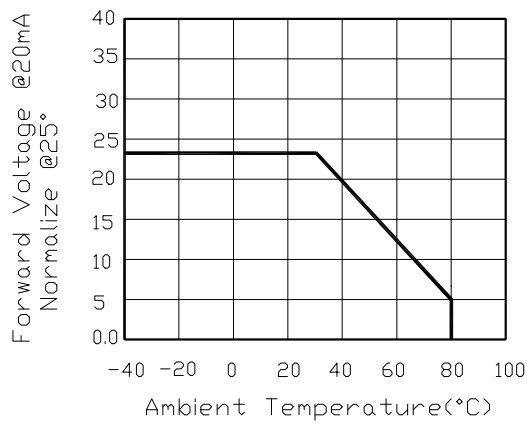


Fig4.Relative Intensity vs. Temperature

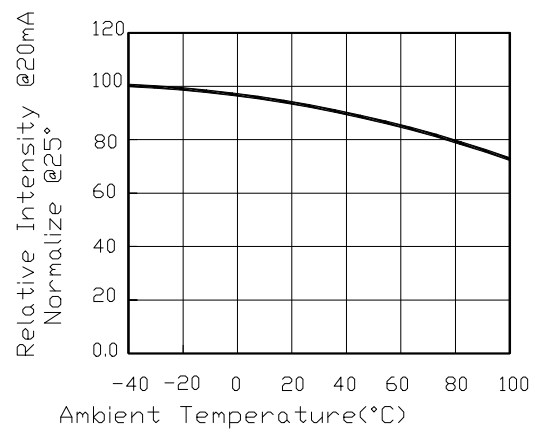


Fig5.Relative Intensity vs. Wavelength

